

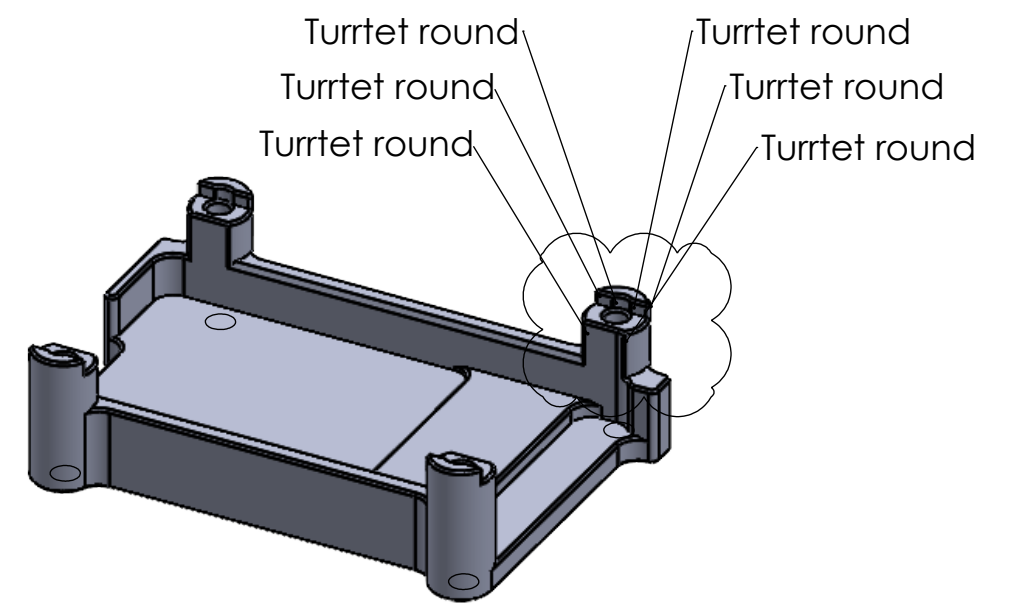
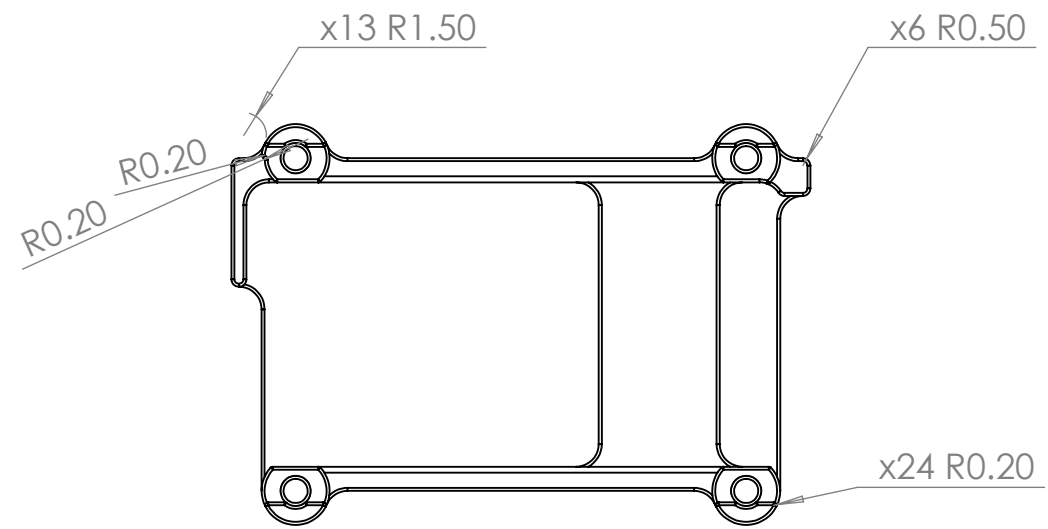


UNLESS OTHERWISE SPECIFIED: DIMENSIONS ARE IN MILLIMETERS TOLERANCES: ISO-2768-1 (Fine)				FINISH: As-machined		DEBURR AND BREAK SHARP EDGES		DO NOT SCALE DRAWING		REVISION		1.0.0					
INGENIA MOTION CONTROL																	
		NAME		SIGNATURE		DATE								TITLE: DENALI CASE			
DRAWN		Alejandro Conde				01/16/23											
CHK'D		Arnau Solanellas				01/20/23											
APPV'D																	
MFG																	
Q.A																	
								MATERIAL:		DWG NO.				A3			
								Aluminum 6061-T6		i056A-M1 (THERMALPAD_2MM)							
								WEIGHT:		7.32 g				SCALE:2:1		SHEET 1 OF 3	



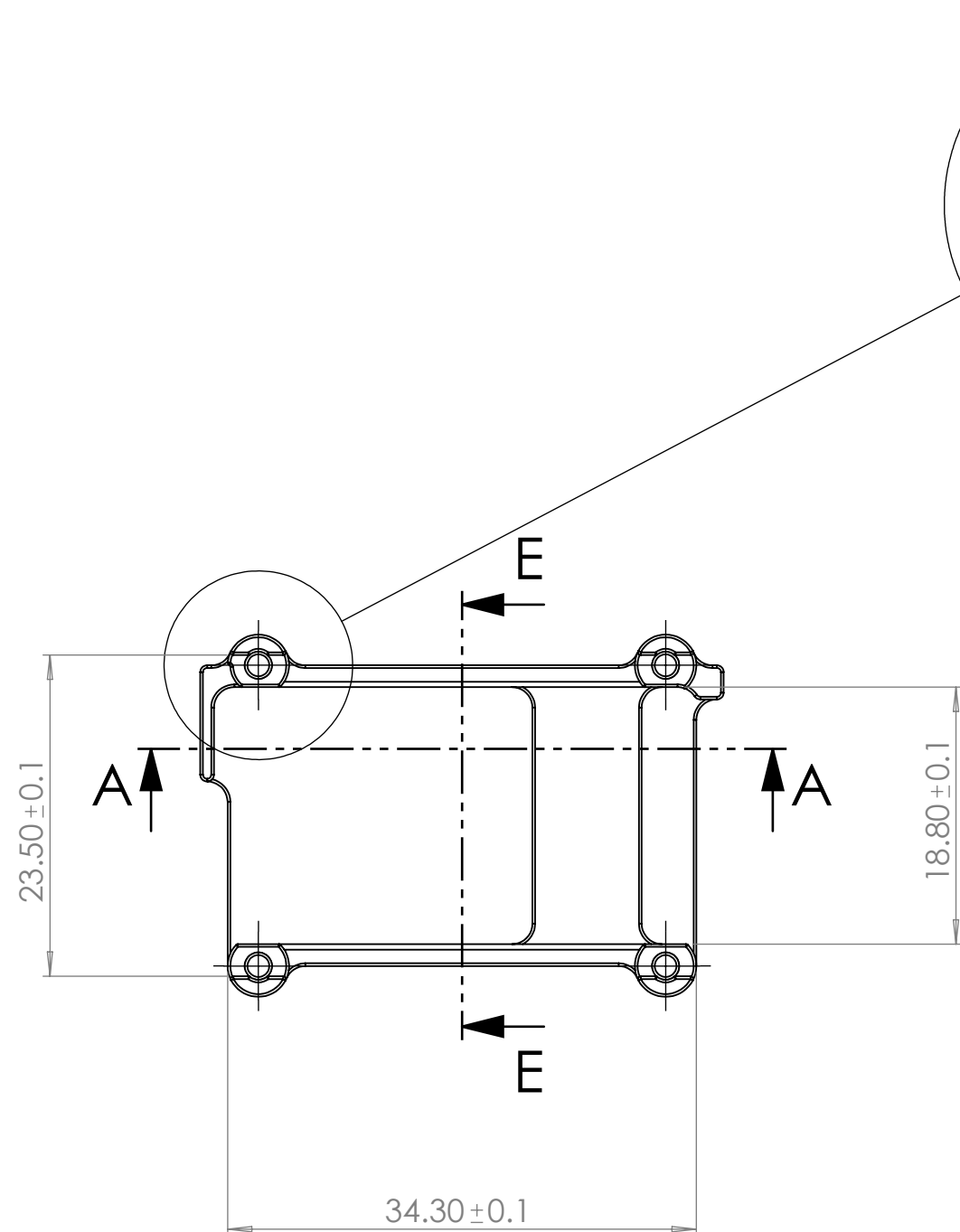
All fillets in this view have the same R1.5 mm.

All the rounds in this view, except the 6 rounds in the turrets, are R0.5 mm.

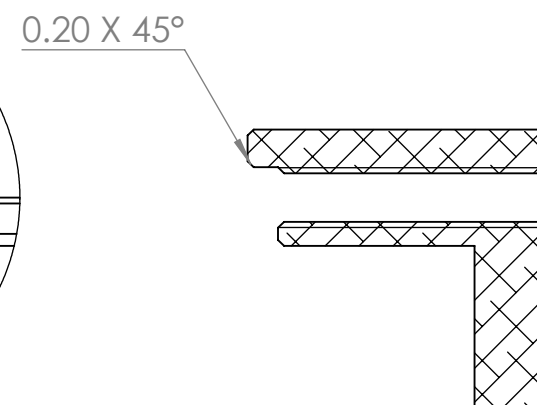
The rounds in the turrets are R0.2 mm.

UNLESS OTHERWISE SPECIFIED: DIMENSIONS ARE IN MILLIMETERS		FINISH: As-machined		DEBURR AND BREAK SHARP EDGES		DO NOT SCALE DRAWING		REVISION 1.0.0	
TOLERANCES: ISO-2768-1 (Fine)						TITLE: DENALI CASE			
DRAWN	Alejandro Conde	SIGNATURE	DATE			DWG NO. i056A-M1 (THERMALPAD_2MM)		A3	
CHK'D	Arnau Solanellas		01/20/23						
APPV'D									
MFG									
Q.A									
				MATERIAL: Aluminum 6061-T6					
				WEIGHT: 7.32 g		SCALE:2:1		SHEET 2 OF 3	

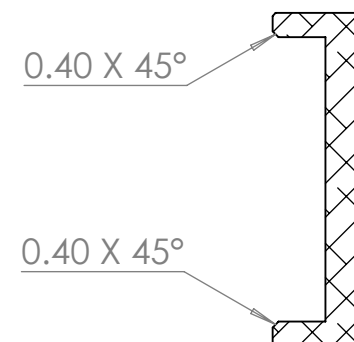




DETAIL J-J
SCALE 4 : 1

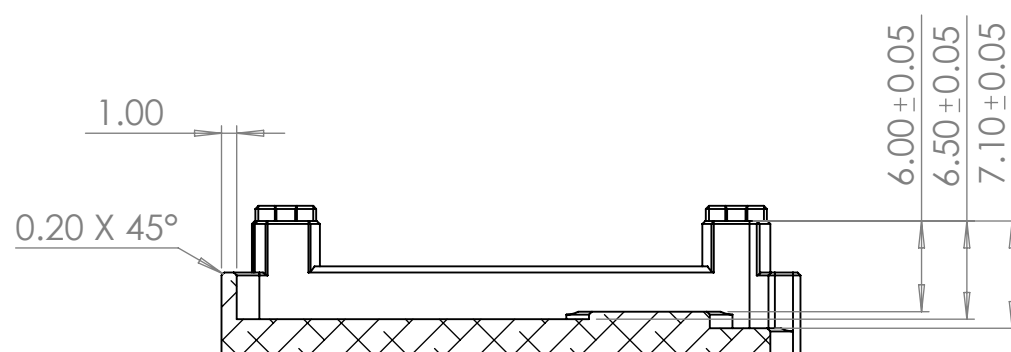


SECTION J-J
SCALE 4 : 1



SECTION E-E

All chamfers in the part are 0.20 X 45°, except the two chamfers indicated in the annotations of section E-E



SECTION A-A

UNLESS OTHERWISE SPECIFIED: DIMENSIONS ARE IN MILLIMETERS				FINISH: As-machined				DEBURR AND BREAK SHARP EDGES				DO NOT SCALE DRAWING				REVISION				1.0.0											
TOLERANCES: ISO-2768-1 (Fine)												INGENIA MOTION CONTROL																			
		NAME		SIGNATURE		DATE								TITLE:		DENALI CASE															
DRAWN		Alejandro Conde				01/16/23																									
CHK'D		Arnau Solanellas				01/20/23																									
APPV'D																															
MFG																															
Q.A																DWG NO.				A3											
																i056A-M1 (THERMALPAD_2MM)															
																MATERIAL:				Aluminum 6061-T6											
																WEIGHT:				7.32 g				SCALE:2:1				SHEET 3 OF 3			

